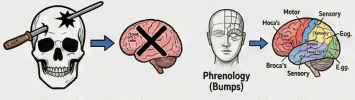
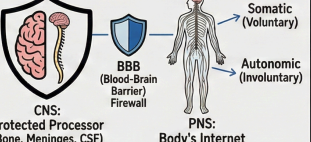
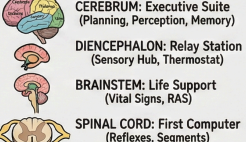
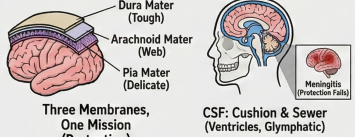
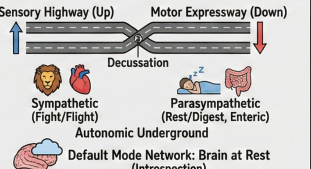
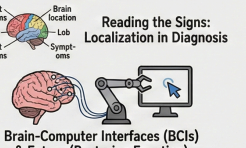


Wiring Consciousness

- Discover how your incredibly vast nervous system is organized with elegant simplicity.
- Learn how different parts of your brain and spinal cord manage everything you do and feel.
- Understand how studying brain injuries, like Phineas Gage's, helped us map brain functions.
- Explore how your brain controls automatic body processes while also allowing complex thoughts.
- See how your brain evolved from ancient structures to the sophisticated organ you have today.

MACROSCOPIC ORGANIZATION OF THE NERVOUS SYSTEM

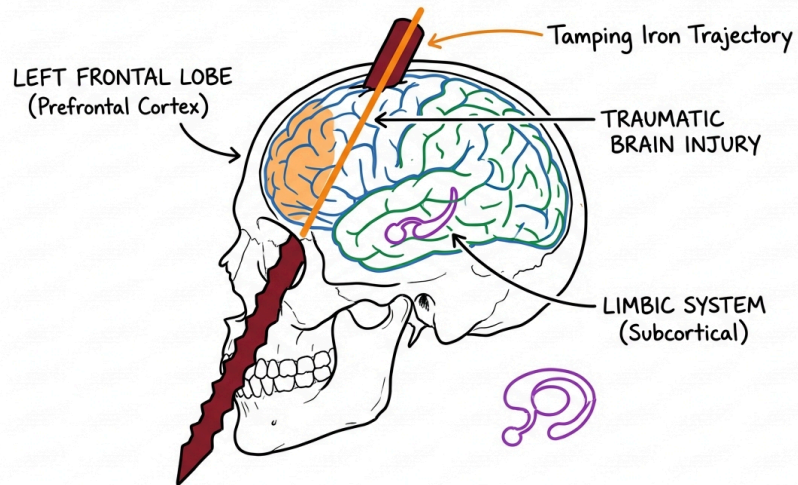
<p>I. PHINEAS GAGE'S REVELATION (LOCALIZATION)</p>  <p>Function = Location. Executive & Social Behavior.</p> <p>From Phrenology (Bumps) to Modern Mapping.</p>	<p>II. THE GRAND DIVISION: CENTRAL vs PERIPHERAL</p>  <p>CNS: Protected Processor (Bone, Meninges, CSF)</p> <p>PNS: Body's Internet</p> <p>BBB (Blood-Brain Barrier) Firewall</p> <p>Somatic (Voluntary)</p> <p>Autonomic (Involuntary)</p>	<p>III. ASCENDING THE NEURAXIS (HIERARCHY)</p>  <p>CEREBRUM: Executive Suite (Planning, Perception, Memory)</p> <p>DIENCEPHALON: Relay Station (Sensory Hub, Thermostat)</p> <p>BRAINSTEM: Life Support (Vital Signs, RAS)</p> <p>SPINAL CORD: First Computer (Reflexes, Segments)</p>
<p>IV. MENINGES & VENTRICULAR SYSTEM (FORTRESS)</p>  <p>Dura Mater (Tough)</p> <p>Arachnoid Mater (Web)</p> <p>Pia Mater (Delicate)</p> <p>Three Membranes, One Mission (Protection)</p> <p>CSF: Cushion & Sewer (Ventricles, Glymphatic)</p> <p>Meningitis (Protection Fails)</p>	<p>V. FUNCTIONAL SYSTEMS & NETWORKS</p>  <p>Sensory Highway (Up)</p> <p>Motor Expressway (Down)</p> <p>Decussation</p> <p>Sympathetic (Fight/Flight)</p> <p>Parasympathetic (Rest/Digest, Enteric)</p> <p>Autonomic Underground</p> <p>Default Mode Network: Brain at Rest (Introspection)</p>	<p>VI. CLINICAL CORRELATIONS & FUTURE</p>  <p>Patient symptoms - Craters - Patient symptoms</p> <p>Brain location - Lob - Symptoms</p> <p>Reading the Signs: Localization in Diagnosis</p> <p>Brain-Computer Interfaces (BCIs) & Future (Restoring Function)</p>

Hierarchy of Networks: Structure Determines Function, from Reflex to Consciousness.

Gage's Revelation

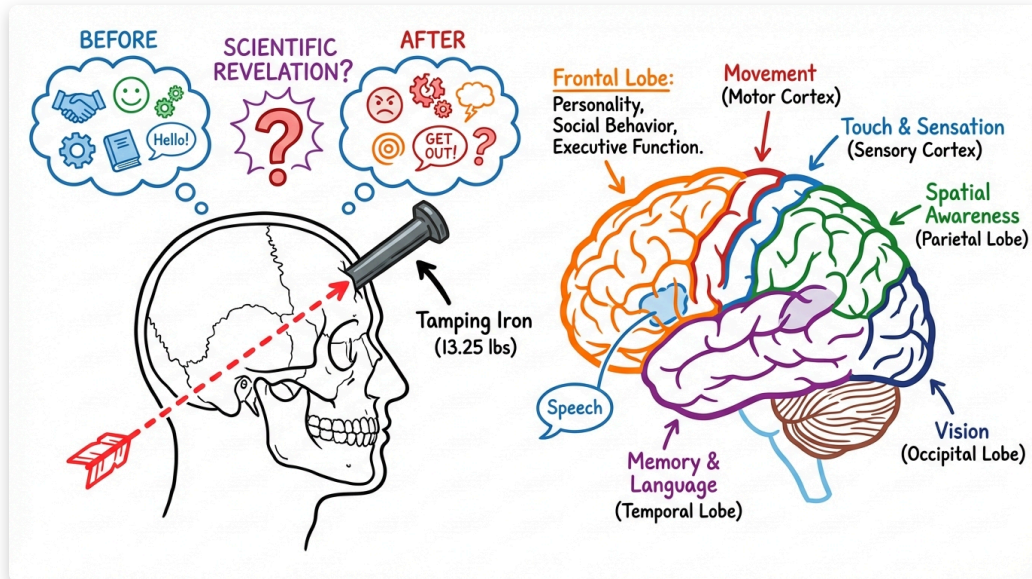
- A railroad spike through Phineas Gage's brain revealed that specific brain areas control different functions.
- Gage's injury proved the brain is not one uniform mass, fundamentally changing how we understood the mind.
- We'll trace how brain mapping evolved from outdated ideas like phrenology to today's detailed insights.
- Discover why the brain's precise organization is essential for all our thoughts, feelings, and actions.

FUNCTIONAL LOCALIZATION: Phineas Gage Case Study



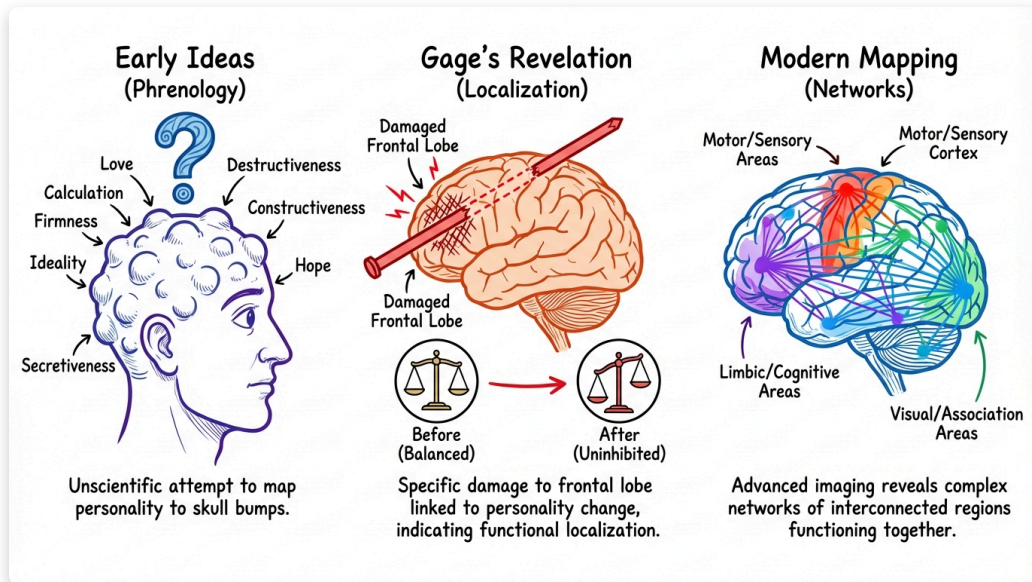
Tamping Iron's Revelation

- Phineas Gage survived a tamping iron piercing his frontal lobe in 1848.
- His personality dramatically changed, but his memory and reasoning stayed sharp.
- This injury proved the brain is not a uniform mass.
- It showed different brain areas perform specific functions.
- The frontal lobe was identified as crucial for personality and social behavior.
- Gage's case launched the mapping of brain functions.



Brain Mapping Evolution

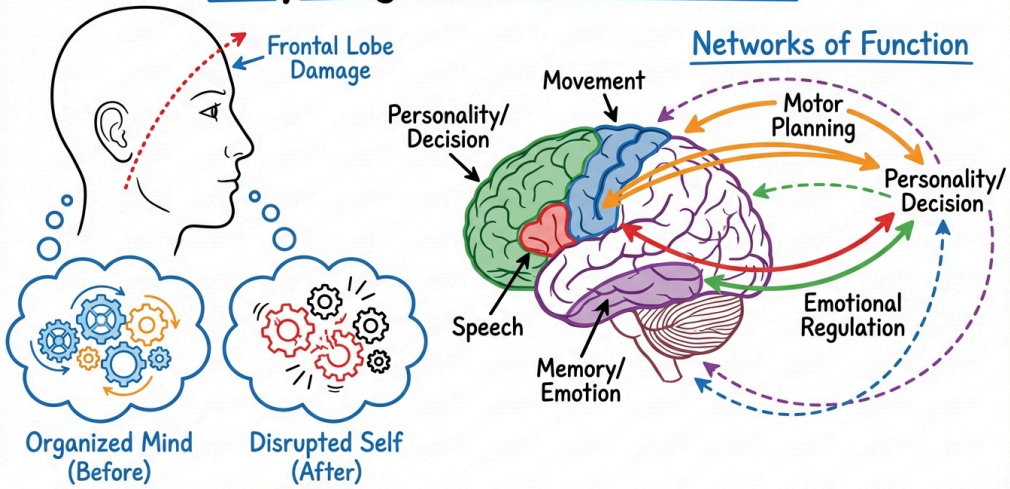
- Early ideas, like phrenology, incorrectly linked skull shape to mental traits.
- Before Phineas Gage, many believed the brain was a uniform mass without specialized areas.
- Gage's injury proved different brain regions control specific functions, like personality.
- Scientists then began mapping areas responsible for speech, movement, and sensation.
- Modern tools like fMRI reveal intricate brain organization and interconnected networks.



Brain's Functional Architecture

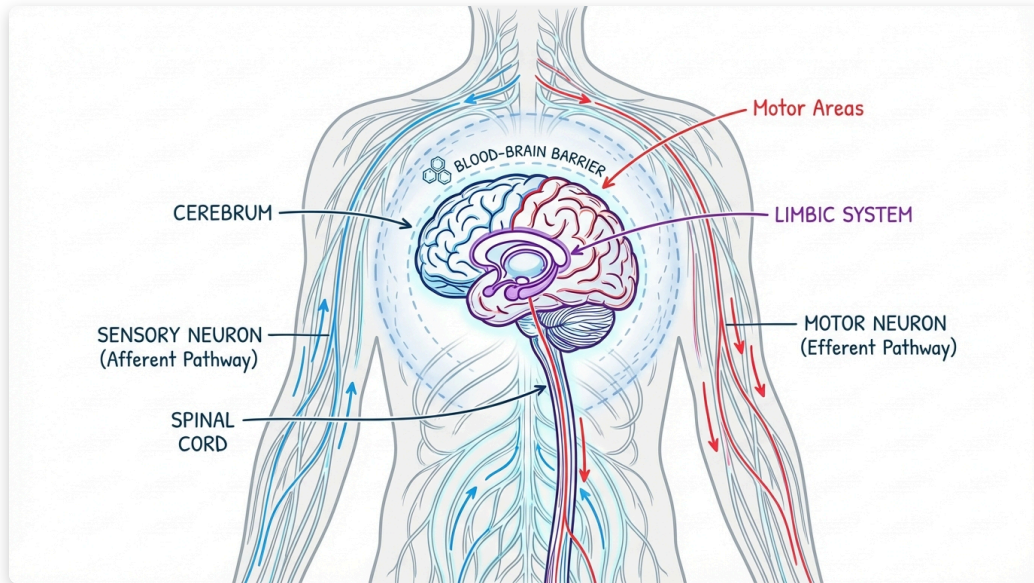
- Phineas Gage's injury proved different brain regions handle specific tasks.
- Damage to his frontal lobe dramatically altered his personality, not his intelligence.
- This revealed the brain is not a uniform mass, but has specialized, distinct parts.
- Specific regions control specific functions, such as executive function, speech, or movement.
- Brain parts connect and work together as a network to create complex abilities.
- This intricate organization is essential for all aspects of our mind and consciousness.

Why Organization Matters



The Nervous System Divide

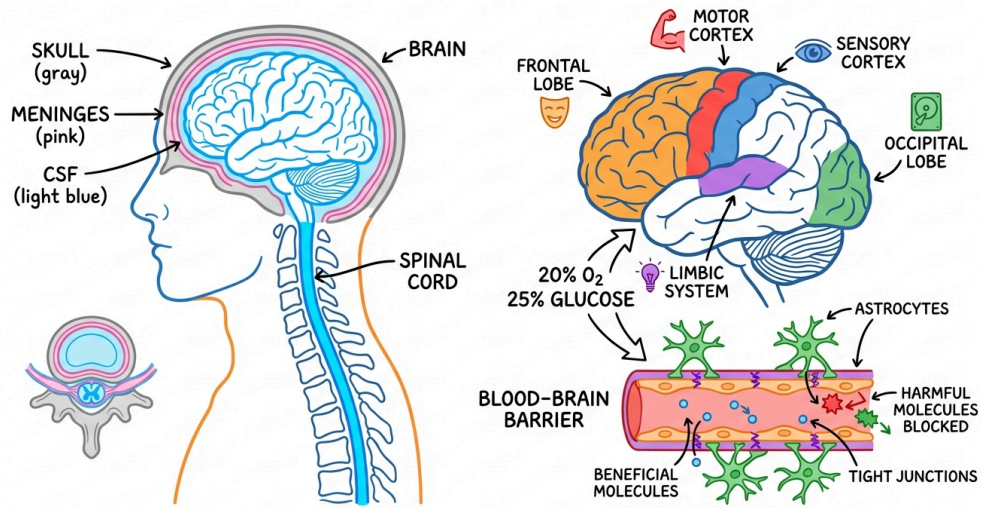
- Discover how your brain and spinal cord form the central command center, protected like a fortress.
- Explore the vast network of nerves that acts as your body's high-speed internet, connecting everything.
- Learn about the special 'firewall' that shields your brain from harmful substances.
- See how real-life cases, like Phineas Gage's accident, helped us map out the nervous system's organization.



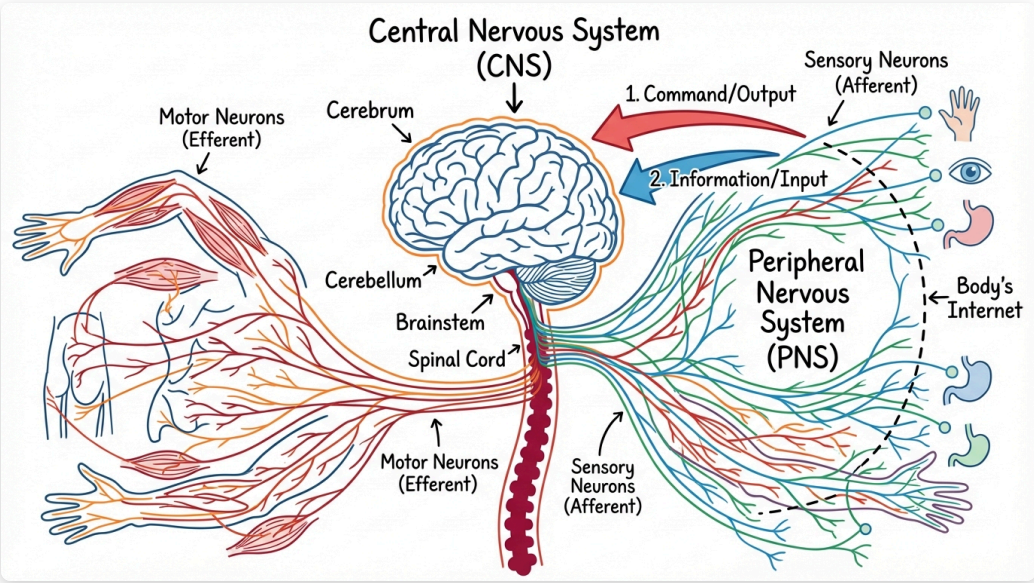
CNS: The Protected Processor

- Your Central Nervous System includes the brain and spinal cord.
- It is the body's control center, processing thoughts, sensations, and movements.
- The CNS is protected by bones, special membranes (meninges), and cushioning fluid.
- A special blood-brain barrier guards it from harmful substances in the bloodstream.
- Your brain is highly organized, with different areas managing specific functions like personality and memory.
- Despite its weight, the brain uses a large amount of your body's oxygen and sugar.

CENTRAL NERVOUS SYSTEM: PROTECTED PROCESSOR

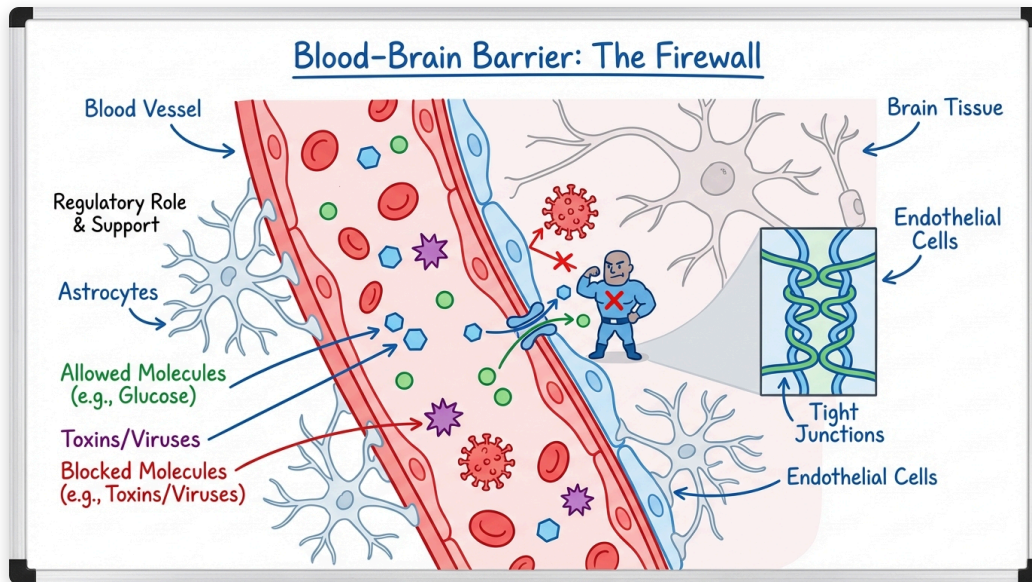


PNS: The Body's Internet



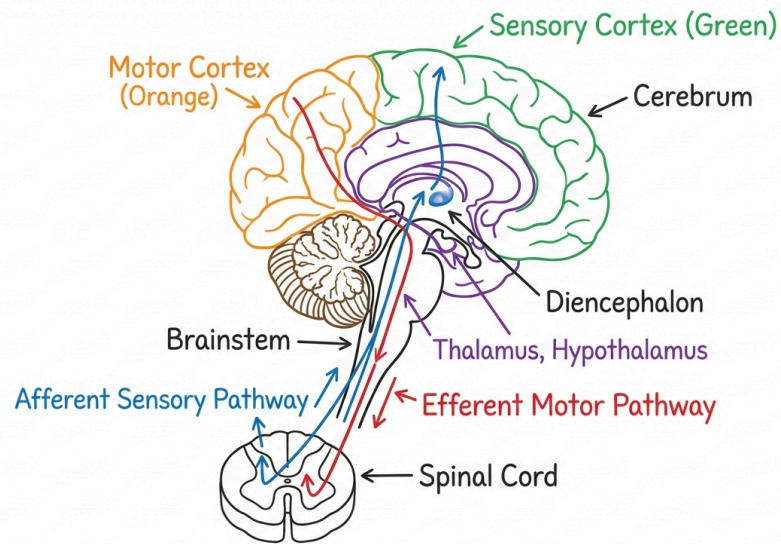
Blood-Brain Barrier: The Firewall

- The blood-brain barrier protects your brain and spinal cord.
- It acts like a molecular bouncer for the central nervous system.
- This barrier strictly controls what enters the brain from your bloodstream.
- Specialized tight junctions between cells form this protective barrier.
- Astrocytes and pericytes actively help regulate the barrier's function.



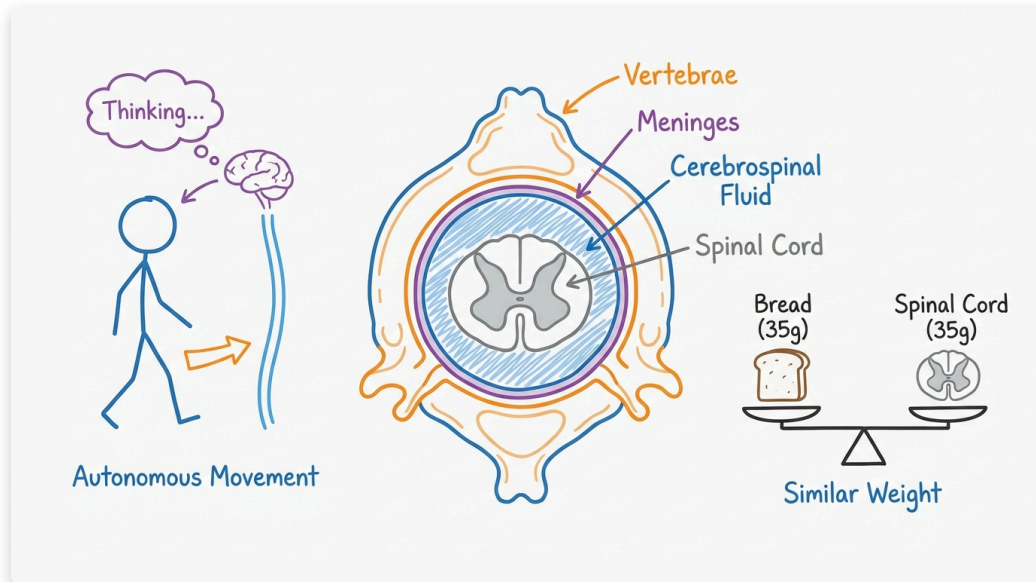
Ascending the Neuraxis

- Journey through your nervous system, from the basic spinal cord to the complex brain.
- Discover the unique functions of each brain region, from vital life support to higher thinking.
- Learn how accidents like Phineas Gage's helped us map brain functions and understand consciousness.
- Explore the intricate design, vast connections, and protective systems of your body's master control center.



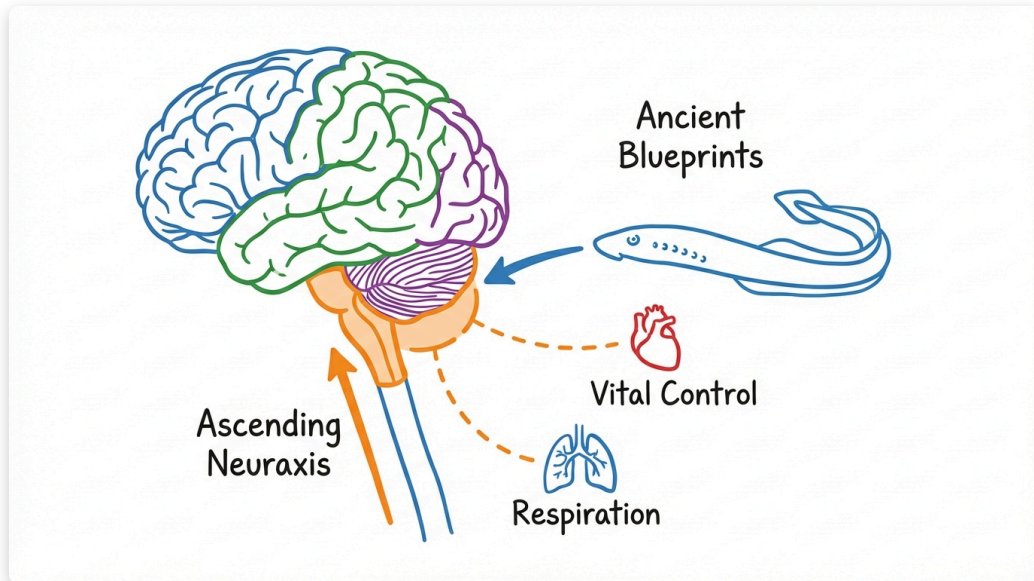
Spinal Cord: First Computer

- The spinal cord is a core part of your Central Nervous System (CNS).
- It controls movements, such as walking, without direct brain commands.
- This makes it an initial 'computer' for essential body actions.
- Bones, membranes (meninges), and fluid protect this vital structure.
- It is a small organ, weighing only about 35 grams.



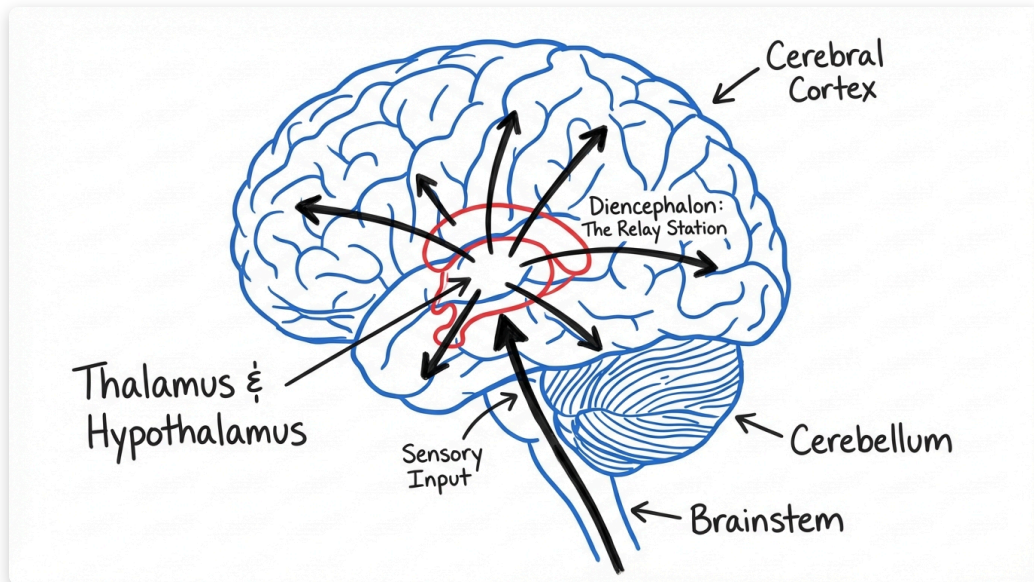
Brainstem: Ancient Life Core

- The brainstem serves as the foundational 'basement' of the brain's architecture.
- It is an evolutionarily ancient component of the nervous system.
- Its fundamental design shares 'blueprints with a lamprey', a primitive vertebrate.
- This ancient heritage indicates it controls critical, basic survival functions.



Diencephalon: The Relay Station

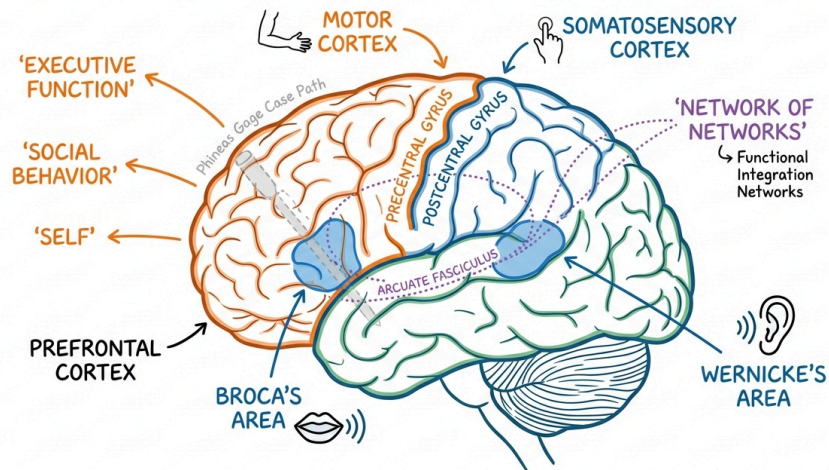
- The provided text does not contain specific information about the Diencephalon.
- Therefore, no details regarding its structure or function as a relay station can be extracted from the given content.



Cerebrum: The Executive Suite

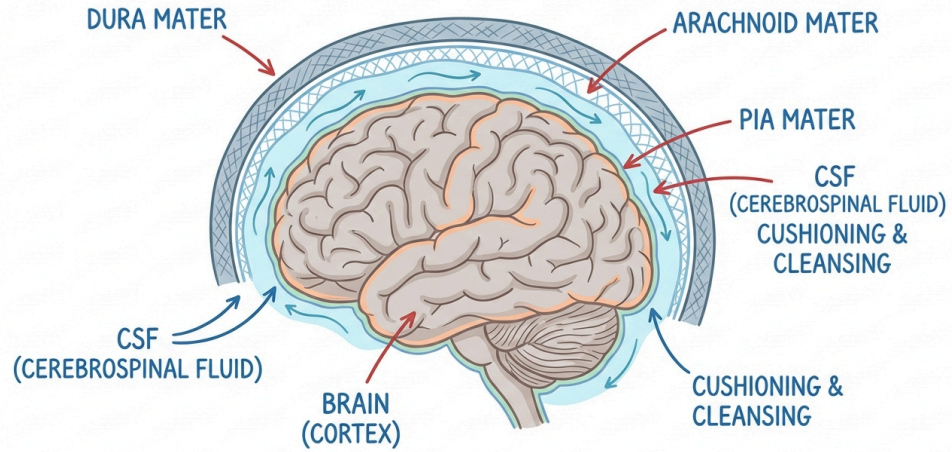
- The frontal lobe manages executive functions, social behavior, and your sense of self.
- Specific cerebrum regions handle distinct tasks like speech, language, movement, and sensation.
- The prefrontal cortex, a recently evolved area, is vital for complex thought and consciousness.
- Your brain processes all sensations, controls voluntary actions, generates thoughts, and stores memories.
- The cerebrum operates as a 'network of networks,' integrating specialized areas to form the mind.

CEREBRUM: THE EXECUTIVE SUITE



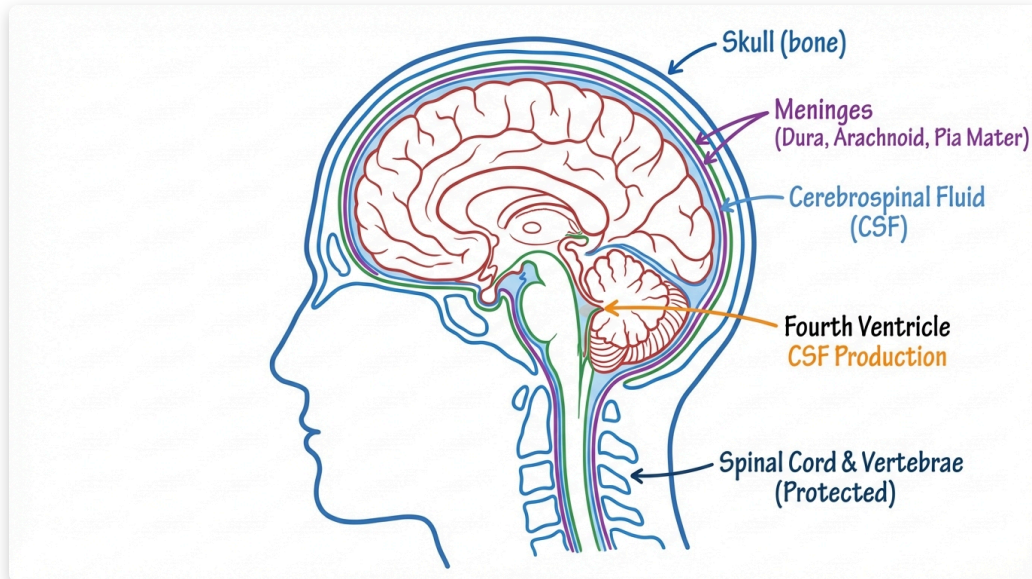
Brain's Protective Systems

- Discover the three strong layers that defend your brain and spinal cord.
- Learn about the special fluid that cushions your brain and removes waste.
- Understand what happens when these vital protections fail, such as with meningitis.



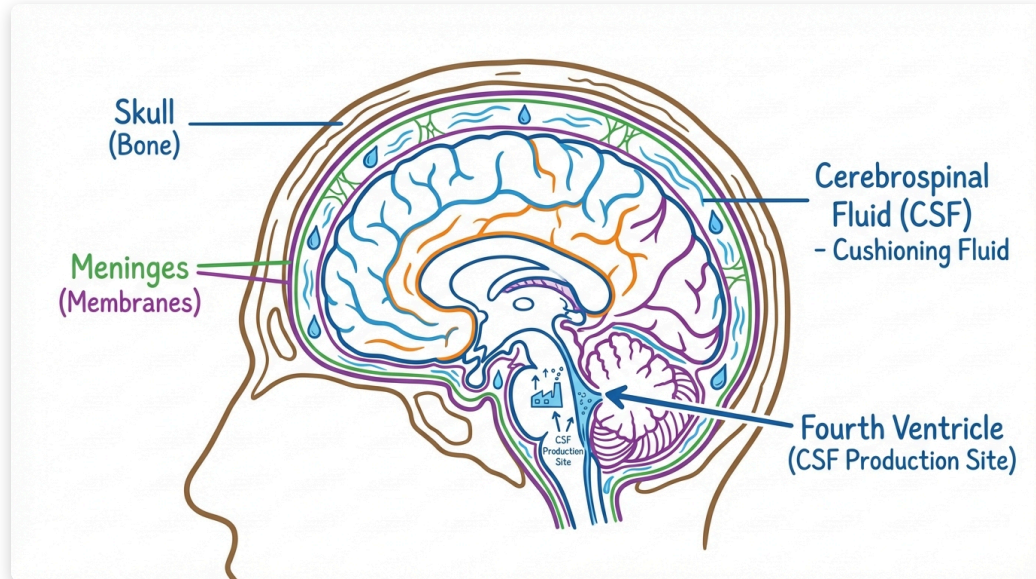
Meninges: Triple-Wrapped CNS Protection

- The Central Nervous System (CNS) includes the brain and spinal cord.
- The CNS receives 'triple protection' from bone, membranes, and fluid.
- The meninges are specialized membranes forming a 'triple-wrapped fortress'.
- Cerebrospinal Fluid (CSF) cushions the brain and spinal cord.
- The brain's fourth ventricle produces this vital cushioning fluid.
- Bone, meninges, and CSF work together to safeguard the CNS.



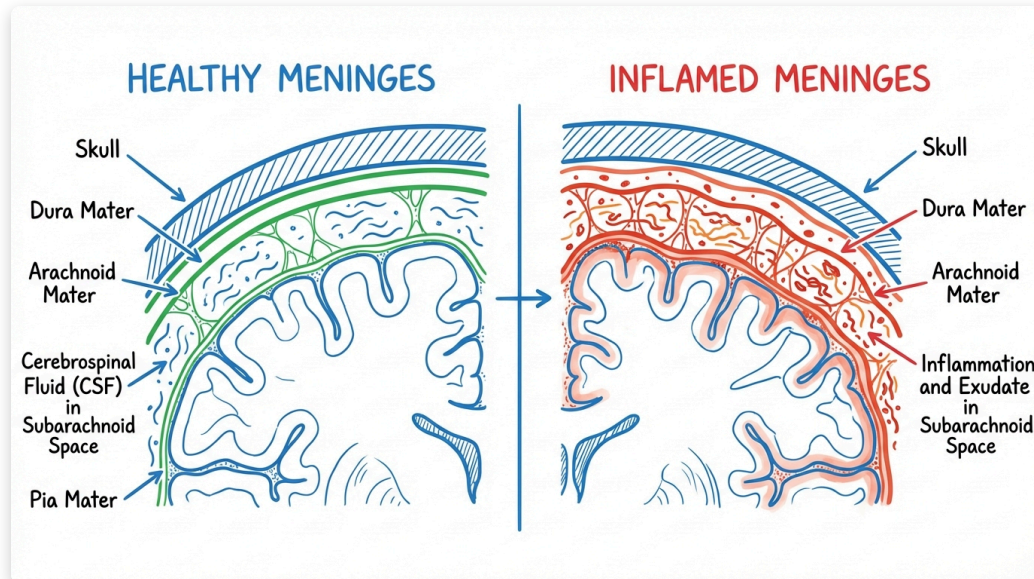
Cerebrospinal Fluid: The Brain's Cushion

- Cerebrospinal Fluid (CSF) is a vital cushioning fluid.
- The brain manufactures its own cushioning fluid.
- CSF is produced in the hidden fourth ventricle.
- CSF provides one of three layers of protection for the brain and spinal cord.



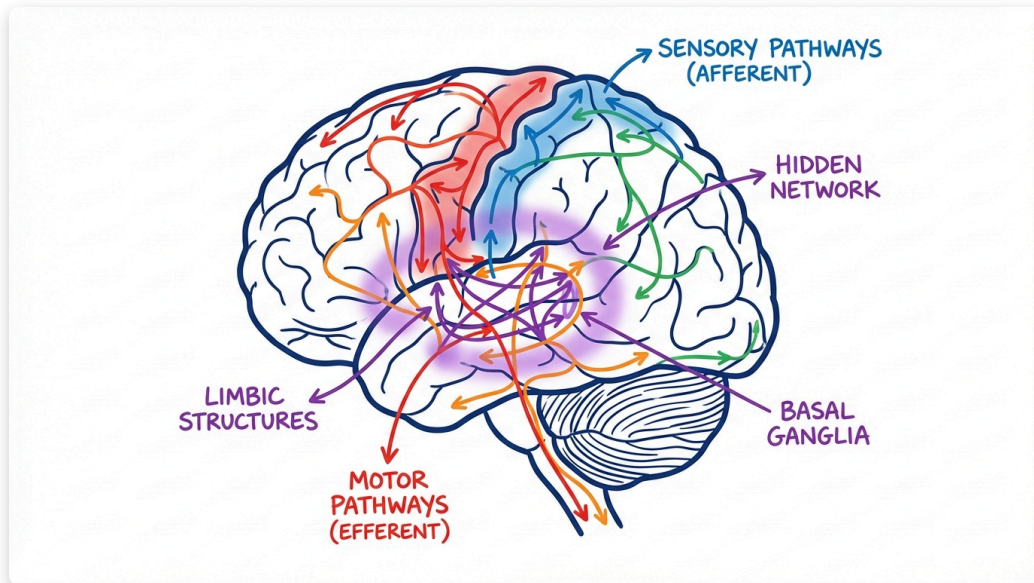
Meningitis: No Information

- The provided text extensively describes the protective layers of the CNS, including the meninges and cerebrospinal fluid.
- However, the specific topic of 'When protection fails: meningitis' is not mentioned.
- The text does not contain any information about meningitis itself.
- Therefore, a detailed slide on meningitis cannot be created from the given content.



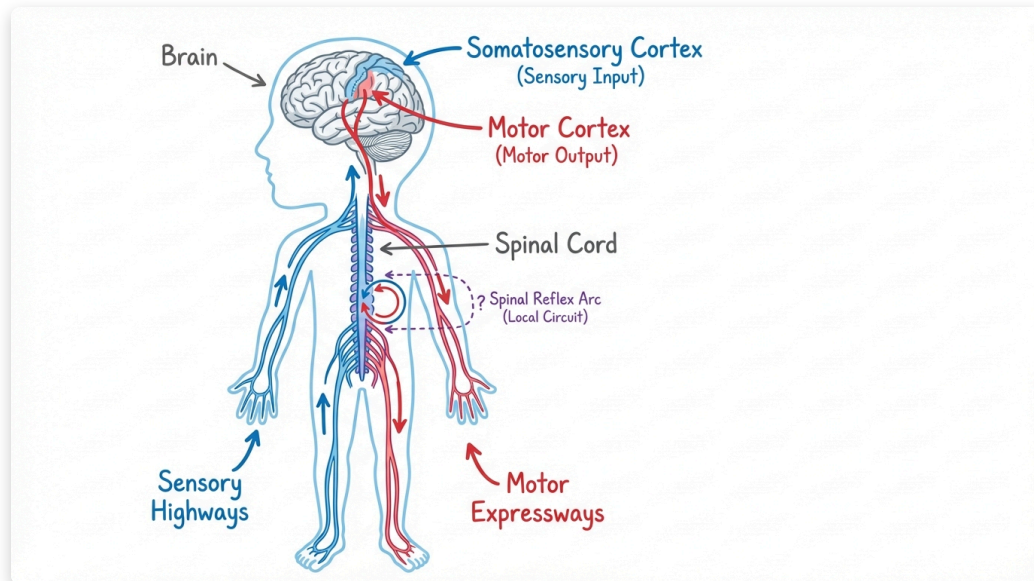
Brain's Control Systems

- Discover how signals travel between your senses, brain, and muscles for movement and sensation.
- Learn about the automatic system that quietly manages your heartbeat, breathing, and other vital functions.
- Explore what your brain does when you're not actively focused, like when you're daydreaming or thinking about yourself.



Sensation & Movement Pathways

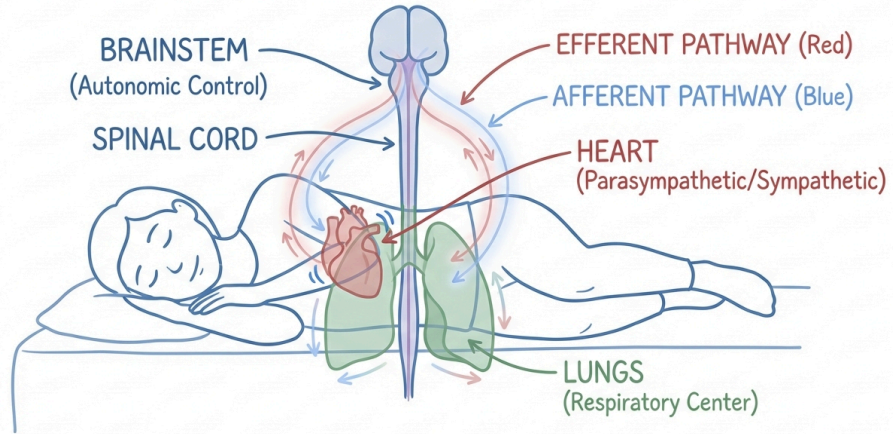
- Your brain processes all sensations from your body.
- Your brain controls all voluntary movements.
- The motor cortex in your brain generates movement commands.
- The somatosensory cortex in your brain receives touch and other sensations.
- Your spinal cord can manage some movements without direct brain input.
- The nervous system has a highly organized structure for these functions.



The Autonomic Underground

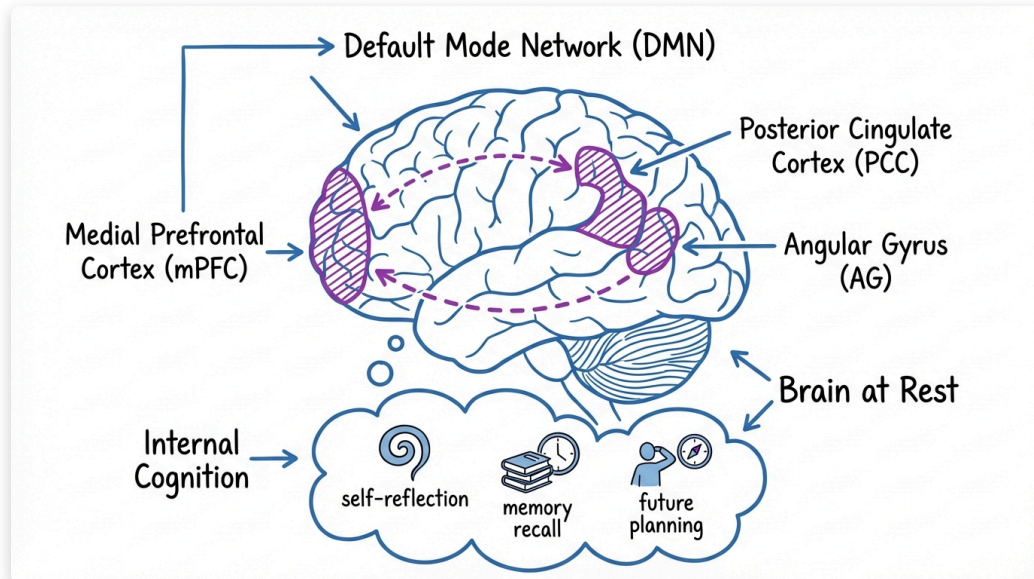
- The autonomic nervous system is vital for survival.
- It actively functions even while you are asleep.

‘Keeps you alive while you sleep.’



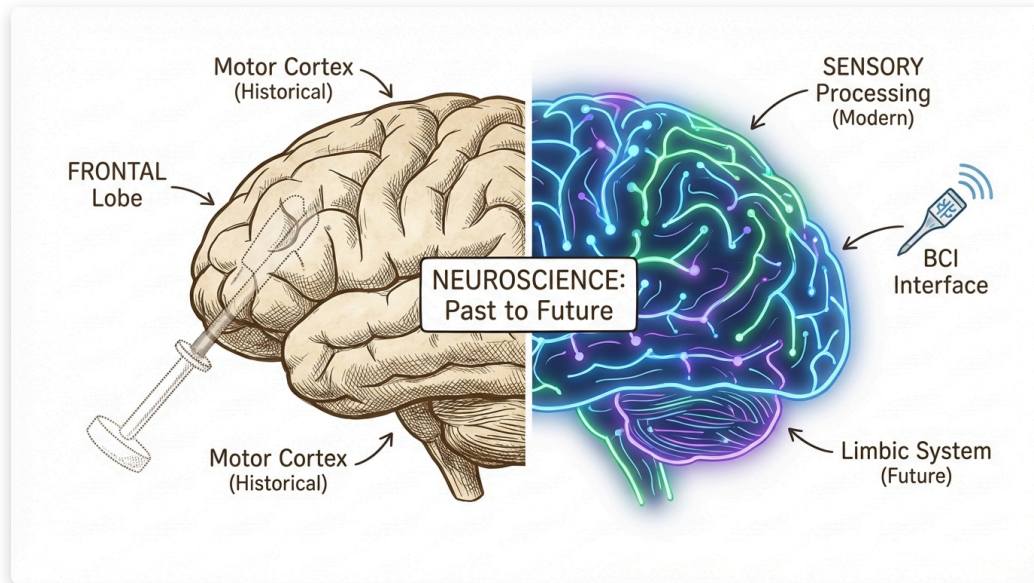
Default Mode Network

- The provided text does not contain specific information about the Default Mode Network.
- The text focuses on general brain organization and localization of function.
- It discusses the central nervous system, brain protection, and historical cases like Phineas Gage.
- Concepts like 'brain at rest' or specific brain networks are not detailed in this content.



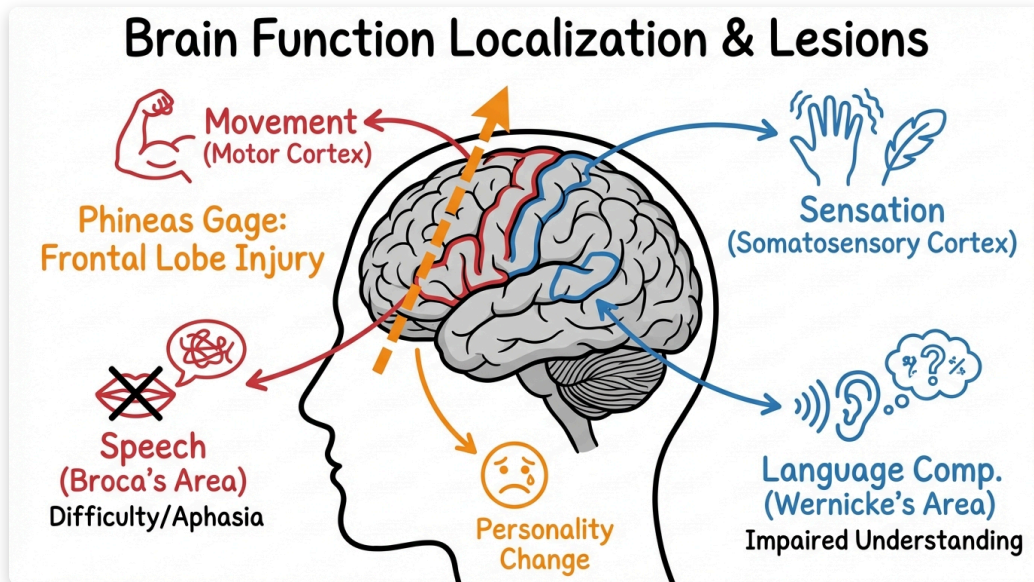
Clinical Correlations and Future

- Understand how your brain's incredible organization controls everything you do.
- Learn how injuries, like Phineas Gage's, helped us map what specific brain parts control.
- Explore how this knowledge helps diagnose brain problems and leads to futuristic brain-computer interfaces.



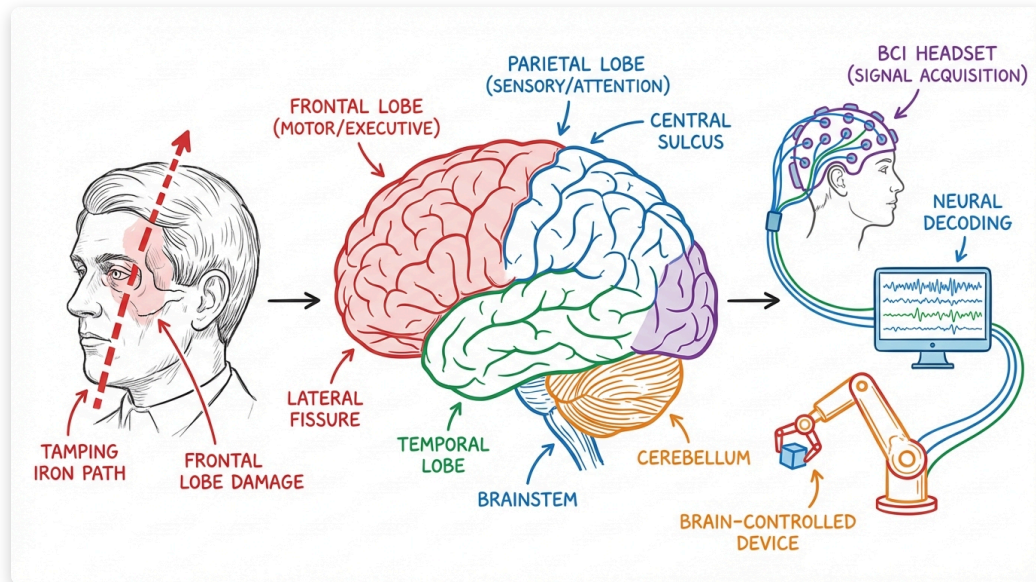
Localization in Diagnosis

- Specific brain damage causes specific changes in function or behavior.
- Different areas of the brain are specialized for particular tasks.
- Observing a patient's symptoms helps doctors locate brain injuries or diseases.
- Mapping brain functions provides a roadmap for understanding conditions.
- Modern technologies continue to precisely map brain organization.



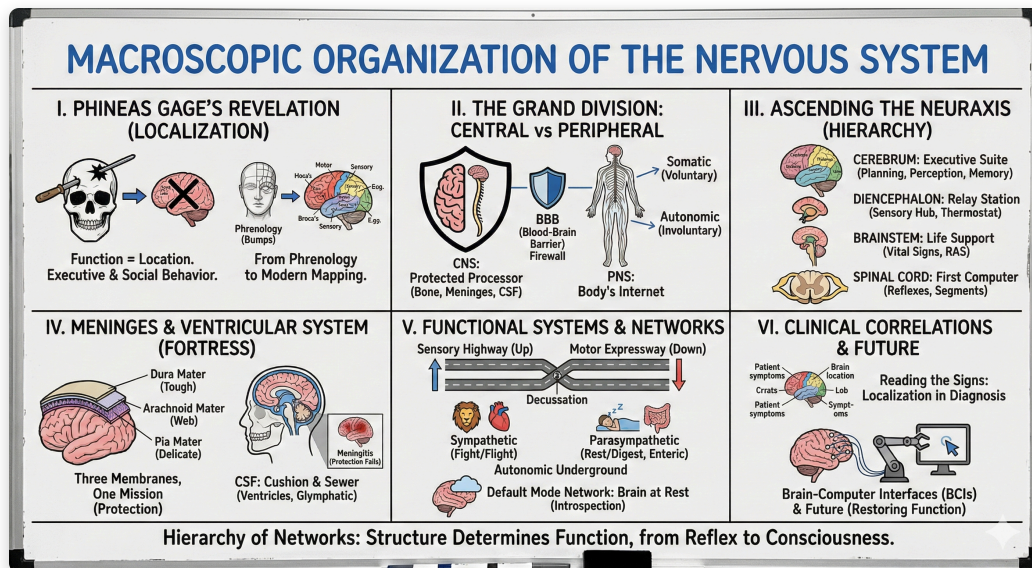
Brain-Computer Interfaces

- Brain-computer interfaces represent advanced neuroscience technology.
- Understanding brain organization is crucial for these interfaces.
- Historical brain injuries, like Phineas Gage's, revealed brain organization.
- Knowledge of brain architecture helps us understand consciousness.
- Modern brain-computer interfaces emerge from this deep understanding.



Chapter Summary: The Exquisite Organization of the Nervous System

- Your nervous system is incredibly organized, with different parts having specific jobs, like Phineas Gage's injury showed us.
- It's divided into the Central Nervous System (brain and spinal cord, the command center) and the Peripheral Nervous System (nerves that connect to the rest of your body).
- The brain is built in layers, from ancient structures handling basic life functions to newer parts responsible for complex thoughts, all working together.
- Special membranes and fluid protect the brain, and all its parts communicate through complex networks to control everything you do, sense, and think.
- Understanding this detailed organization is vital for doctors to diagnose and treat diseases, and it's key to developing future brain technologies.



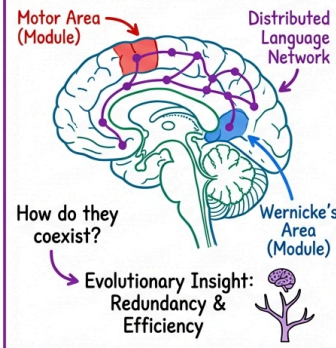
Discussion Questions

- How do specific brain regions (modularity) and widespread neural networks (distributed processing) *coexist* to create complex functions like language, and what does this tell us about evolution?
- What do diverse conditions like vegetative states, locked-in syndrome, and hydranencephaly reveal about the *minimal neural requirements* for consciousness and emotional experience?
- How does the nervous system *balance* its consistent organizational 'blueprint' with its incredible capacity for plasticity and recovery, challenging our ideas of brain specialization?

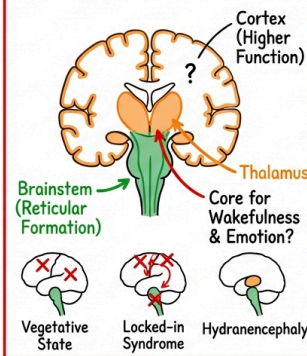
NEUROSCIENCE QUESTIONS & BRAIN FUNCTION

Anatomical Accuracy on Whiteboard

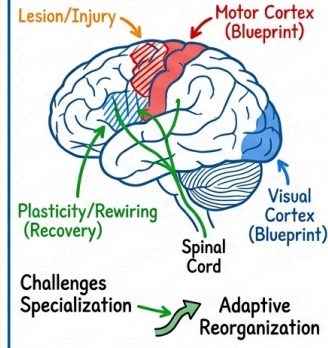
BOX 1: Modularity vs. Distributed Processing



BOX 2: Minimal Neural Requirements for Consciousness



BOX 3: Balancing Blueprint & Plasticity

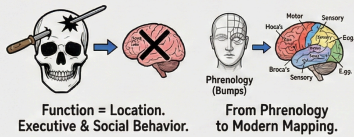


Quiz Yourself: Neuroscience Essentials

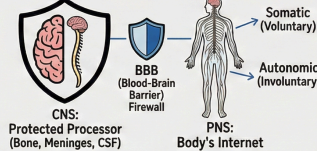
- The blood-brain barrier is formed by tight junctions between _____ cells and is absent in the _____ organs.
- Spinal segments are named for the vertebra _____ which they exit, except in the cervical region where they exit _____.
- The medulla contains the _____ where 85% of corticospinal tract fibers cross to the opposite side.
- CSF is produced by the _____ plexus at a rate of about _____ mL per day.
- The thalamic nucleus that relays visual information is the _____ geniculate, while auditory information goes through the _____ geniculate.
- Upper motor neuron damage causes _____ paralysis with _____ reflexes.
- The enteric nervous system contains approximately _____ neurons and produces _____% of the body's serotonin.

MACROSCOPIC ORGANIZATION OF THE NERVOUS SYSTEM

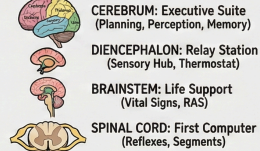
I. PHINEAS GAGE'S REVELATION (LOCALIZATION)



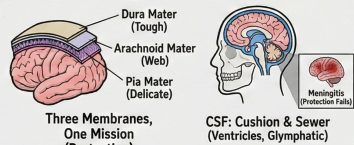
II. THE GRAND DIVISION: CENTRAL vs PERIPHERAL



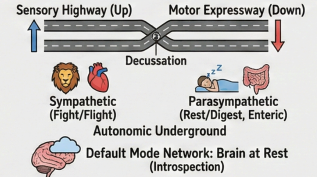
III. ASCENDING THE NEURAXIS (HIERARCHY)



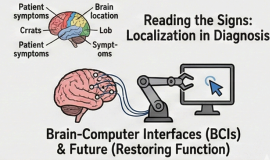
IV. MENINGES & VENTRICULAR SYSTEM (FORTRESS)



V. FUNCTIONAL SYSTEMS & NETWORKS



VI. CLINICAL CORRELATIONS & FUTURE



Hierarchy of Networks: Structure Determines Function, from Reflex to Consciousness.